



RaceME Ultra Update Guide

Step 1:

Go to www.racemecanada.com and download the latest version of 7zip utility located in the updates tab. Install 7zip onto computer as per windows installer.

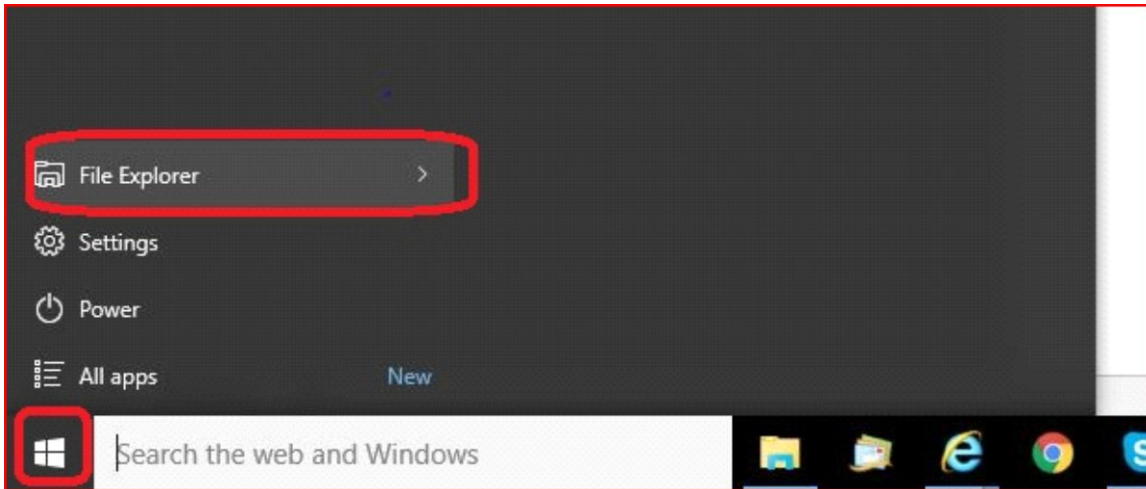
7zip will be requires to unzip the files downloaded from the website. The files are compressed simply to make downloading time faster as the files become smaller.

Step 2:

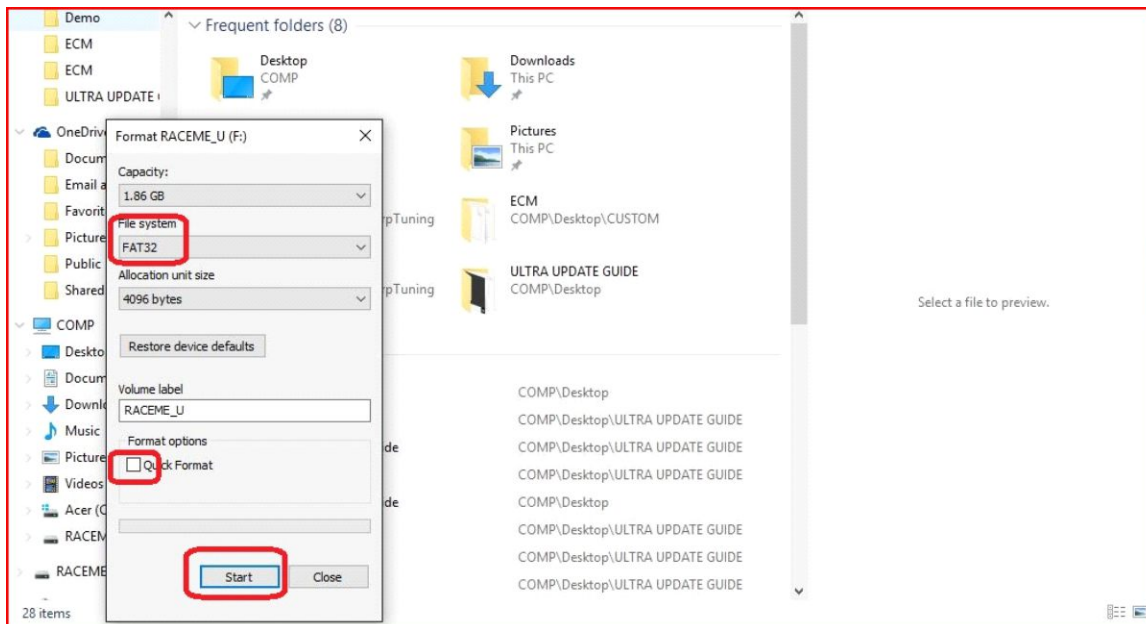
Insert card into micro SD card adapter that was included in Ultra packaging.



Insert card adapter into USB port in the computer.



Click the start button on bottom left side of the task bar, then click file explorer. In windows 7, you will click computer instead of file explorer.



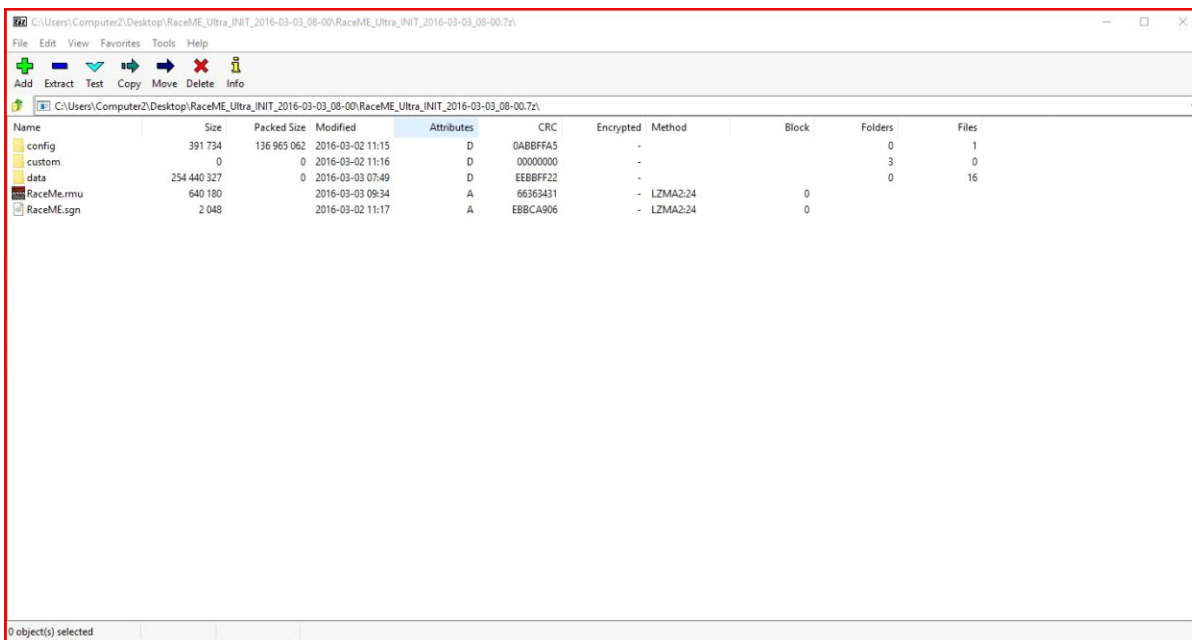
In the file explorer window, find the drive the card is in on the left pane, and right click on the drive. Then left click on format.

Next, make sure file system is FAT32, uncheck the quick format option, and click start. This will erase everything on your card and make room for the new updated files. This process can take up to ten minutes.

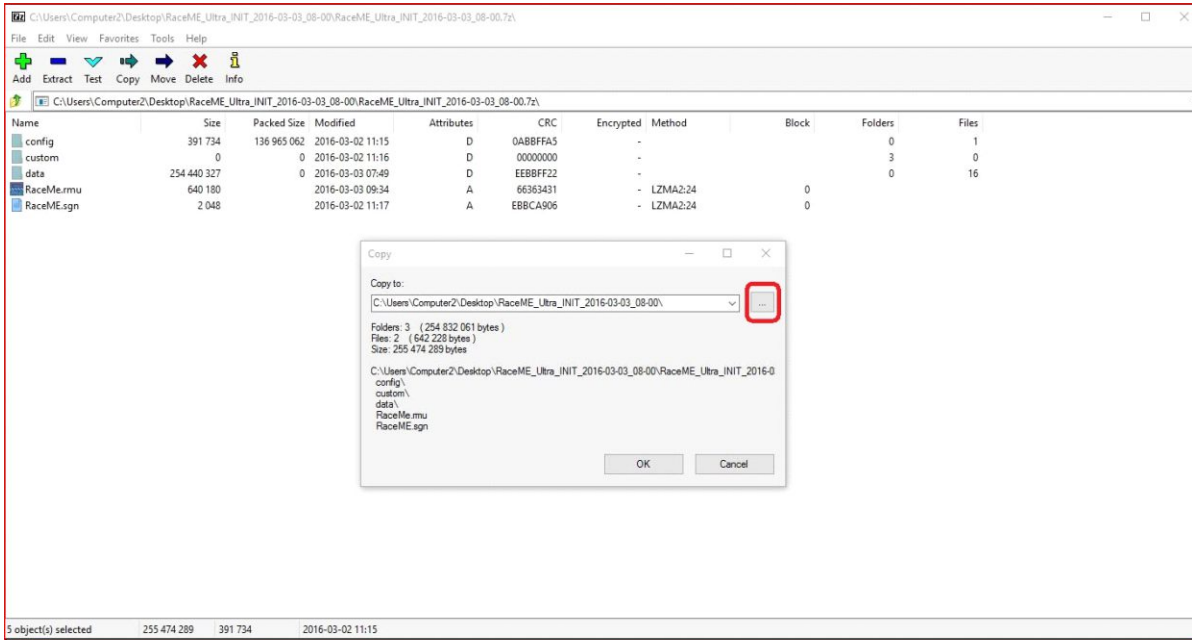
Step 3:

Go to www.racemecanada.com and download the version of the update that you require to update your tuner. Please make extra effort to ensure you are downloading the update that you want.

After the download is complete, open the folder where the download is. These five file folders will appear. These are the files that are required on the SD card.



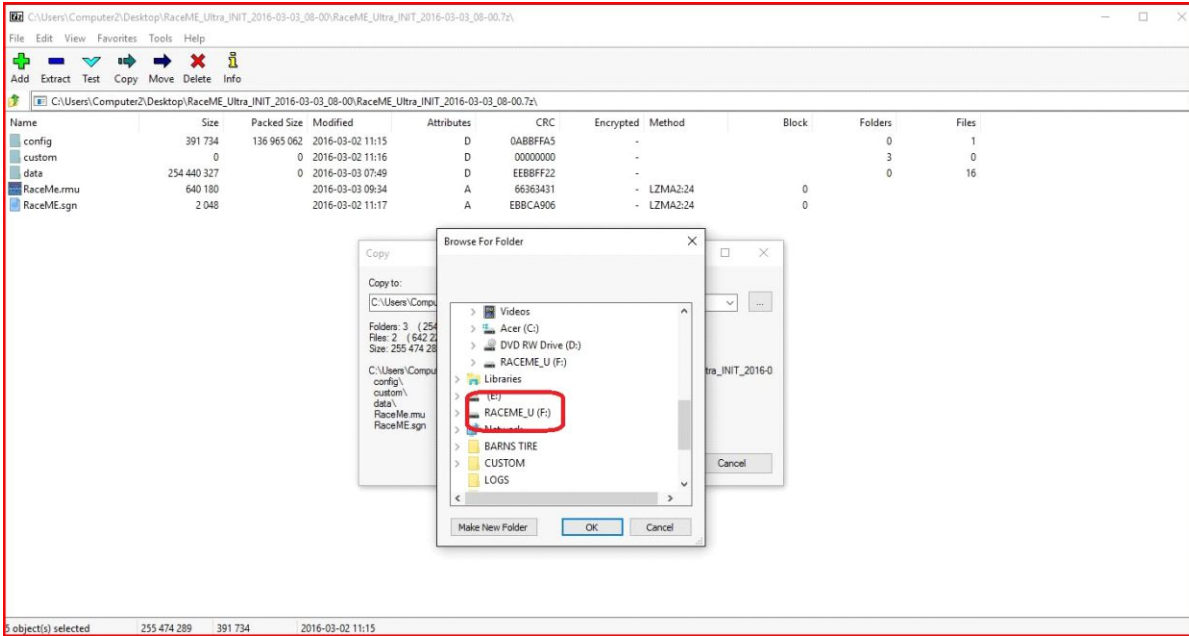
From here, Click on Edit at the top of the screen, then select all (this will highlight all five files, control+A does the same) , then click on extract. This will open “copy” window.



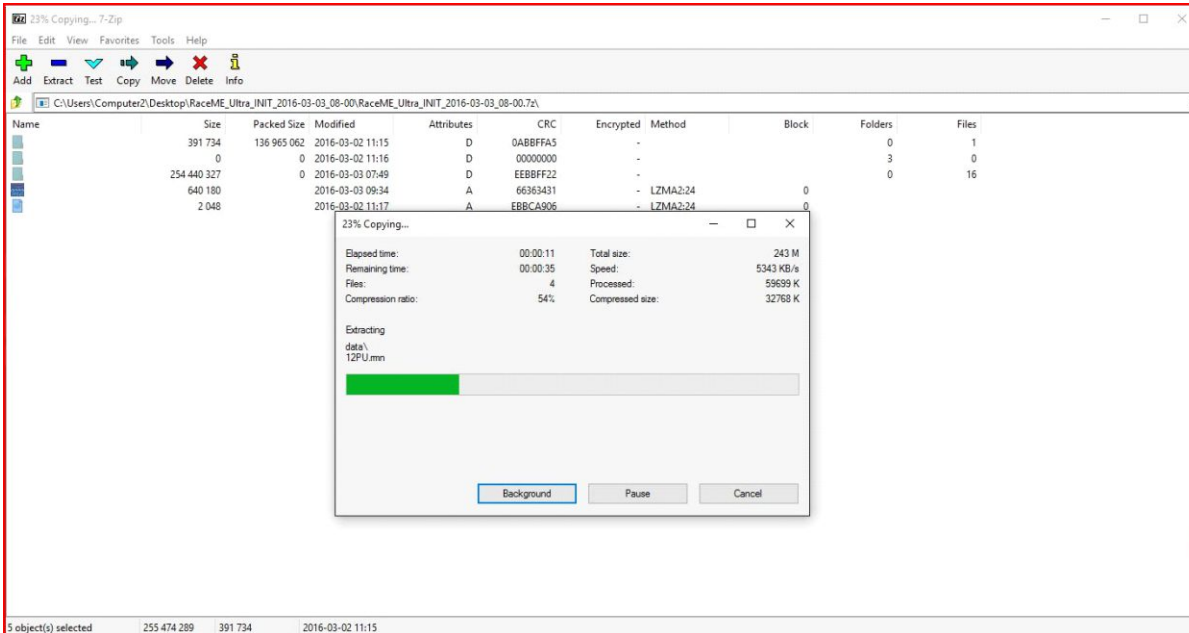
Click the box with three dots to the right of the address bar. This next window will allow you to search the destination folder for the files you have selected.

The destination will be the SD card which should still be plugged into the computer. Just scroll down to find the card. Note: The card should have a letter in brackets attached to it.

This signifies the drive or port it is attached to. Select the drive and click OK.



Then click ok again to the copy window.



A progress bar will appear while files are being transferred to the card. Once the transfer is finished, the update process is complete. Before removing the card from the reader, its best to safely eject the drive to avoid file corruption.



Once the SD card is back in the Ultra Display, power up the tuner, and follow these instructions:

MENU CONFIG TOOL PAGE UP FIRMWARE UPDATE.



RaceME Canada
1 844 572 2636
www.racemecanada.com

Technical Support
tech@racemecanada.com

Sales
sales@racemecanada.com

Accounting, Shipping, General Inquiries
admin@racemecanada.com